

HLDA9 Antibody Validation File

Antibody Information

Antibody name: BCL123a

Specificity: Human BCL11A_{XL}

Antibody species: Mouse

Ig Isotype: IgG1

Immunogen: GST-BCL11A_{XL} recombinant protein

Epitope recognized: 637-835 aa

Specificity: Human and rat

Submitted: Dr Karen Pulford (University of Oxford, Oxford, UK)

Antibody validation data

Validation of BCL123a monoclonal antibody in transfected cells (Figure 1)

Biochemical characterization of BCL123a monoclonal antibody (Figure 2)

Expression in paraffin human reactive tonsil (Figure 3)

Figure 1 Validation of BCL123a monoclonal antibody in transfected cells

Nuclear staining of COS/ BCL11A_{XL} transfectants but not BCL BCL11A_L transfectants using antibody BCL123a.

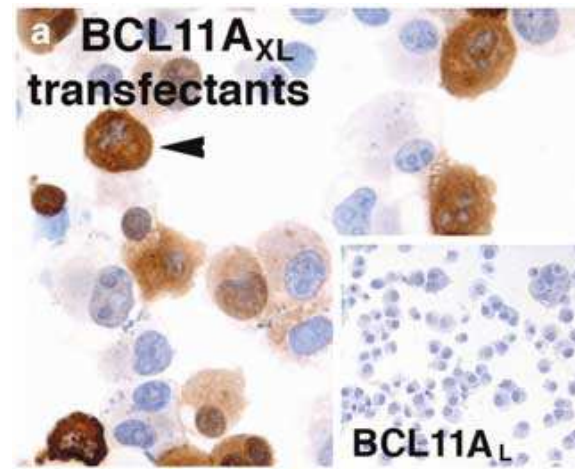
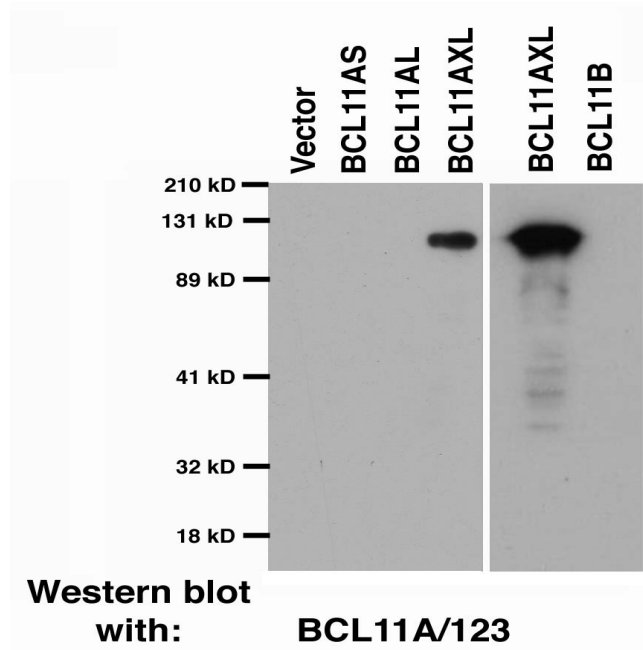
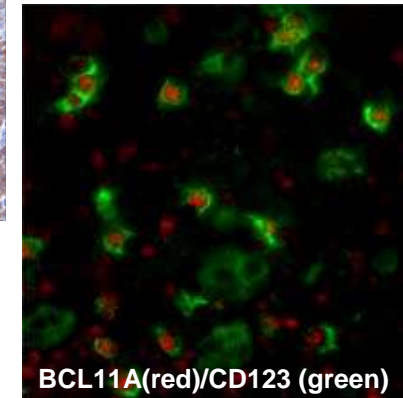
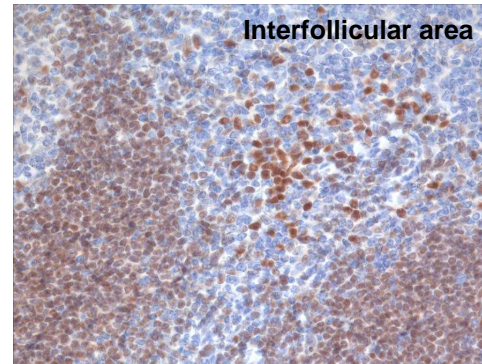
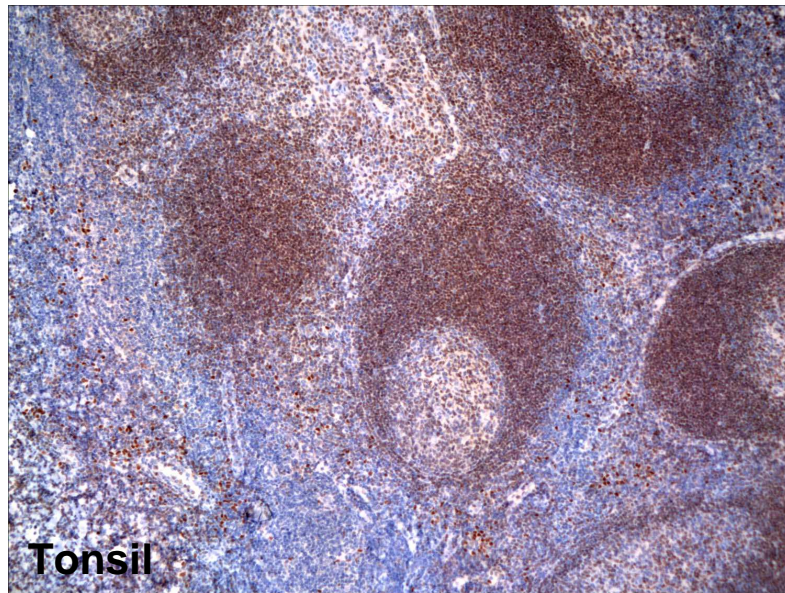


Figure 2 Western blotting characterisation of the BCL123a monoclonal antibody



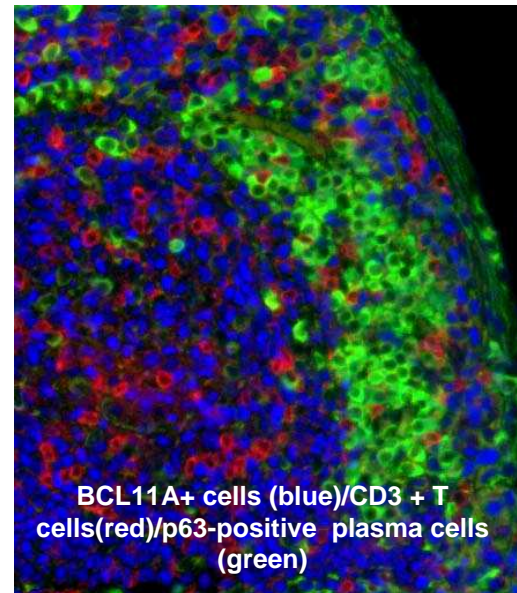
Western Blotting characterization of BCL123a monoclonal antibody with lysates of transfectants expressing different BCL11A isoforms and the highly homologous BCL11B to show specificity for BCL11A_{XL}.

Figure 3: BCL11A_{XL} (BCL123a) expression in tonsil



BCL11A_{XL} is present in B cells (brown) in germinal centres and mantle zones. Double labelling studies show the strongly labelled cells in the interfollicular areas to be CD123-positive pDCs (arrowhead).

BCL11A_{XL} is absent in plasma cells



Publications using antibody to BCL11A_{XL} (BCL123a)

Pulford K, Banham AH, Lyne L, et al. The BCL11AXL transcription factor: its distribution in normal and malignant tissues and use as a marker for plasmacytoid dendritic cells. *Leukemia*. 2006;20:1439-1441.

Weniger MA, Pulford K, Gesk S, et al. Gains of the proto-oncogene BCL11A and nuclear accumulation of BCL11A(XL) protein are frequent in primary mediastinal B-cell lymphoma. *Leukemia*. 2006;20:1880-1882.

Liu H, Ippolito GC, Wall JK, et al. Functional studies of BCL11A: characterization of the conserved BCL11A-XL splice variant and its interaction with BCL6 in nuclear paraspeckles of germinal center B cells. *Mol Cancer*. 2006;5:18.

Marafioti T, Paterson JC, Ballabio E, et al. Novel markers of normal and neoplastic human plasmacytoid dendritic cells. *Blood*. 2008;111:3778-3792.

Chetaille B, Bertucci F, Finetti P, et al. Molecular profiling of classical Hodgkin lymphoma tissues uncovers variations in the tumor microenvironment and correlations with EBV infection and outcome. *Blood*. 2009;113:2765-3775

Patents : NO

Antibody licensed to:.