

# HLDA9 Antibody Validation File

## Antibody Information

**Antibody name:** GI191E  
**Specificity:** Human Bcl-6  
**Antibody species:** Mouse  
**Ig Isotype:** IgG1  
**Immunogen:** pcDNA3-bcl-6 vector  
**Epitope recognized:** Unknown  
**Specificity:** Human

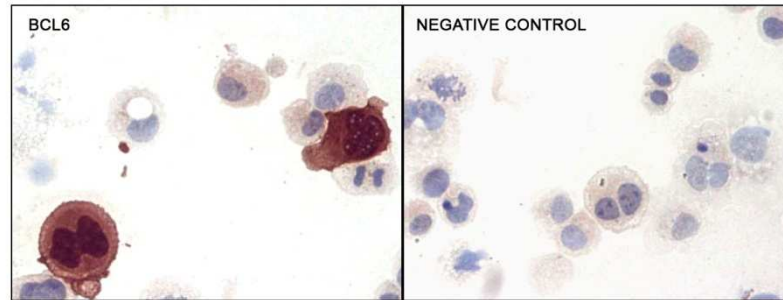
**Submitted:** Giovanna Roncador (Spanish National Cancer Research Centre (CNIO), Spain)

## Antibody validation data

Validation of GI191E monoclonal antibody in transfected cells (Figure 1)  
Biochemical characterization of GI191E monoclonal antibody (Figure 2)  
Expression in reactive human paraffin tonsil (Figure 3)

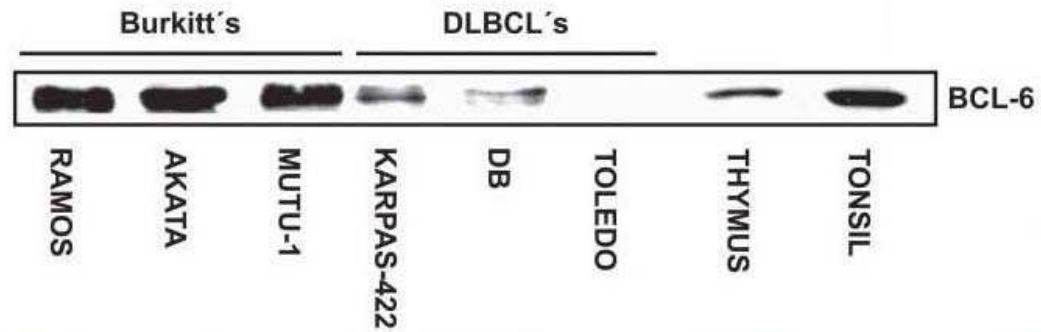
**Figure 1: Validation of G1191E monoclonal antibody in transfected cells**

Nuclear and cytoplasmic staining on frozen cytospin preparations of transfected HEK293T/Bcl-6 cells using antibody G1191E.

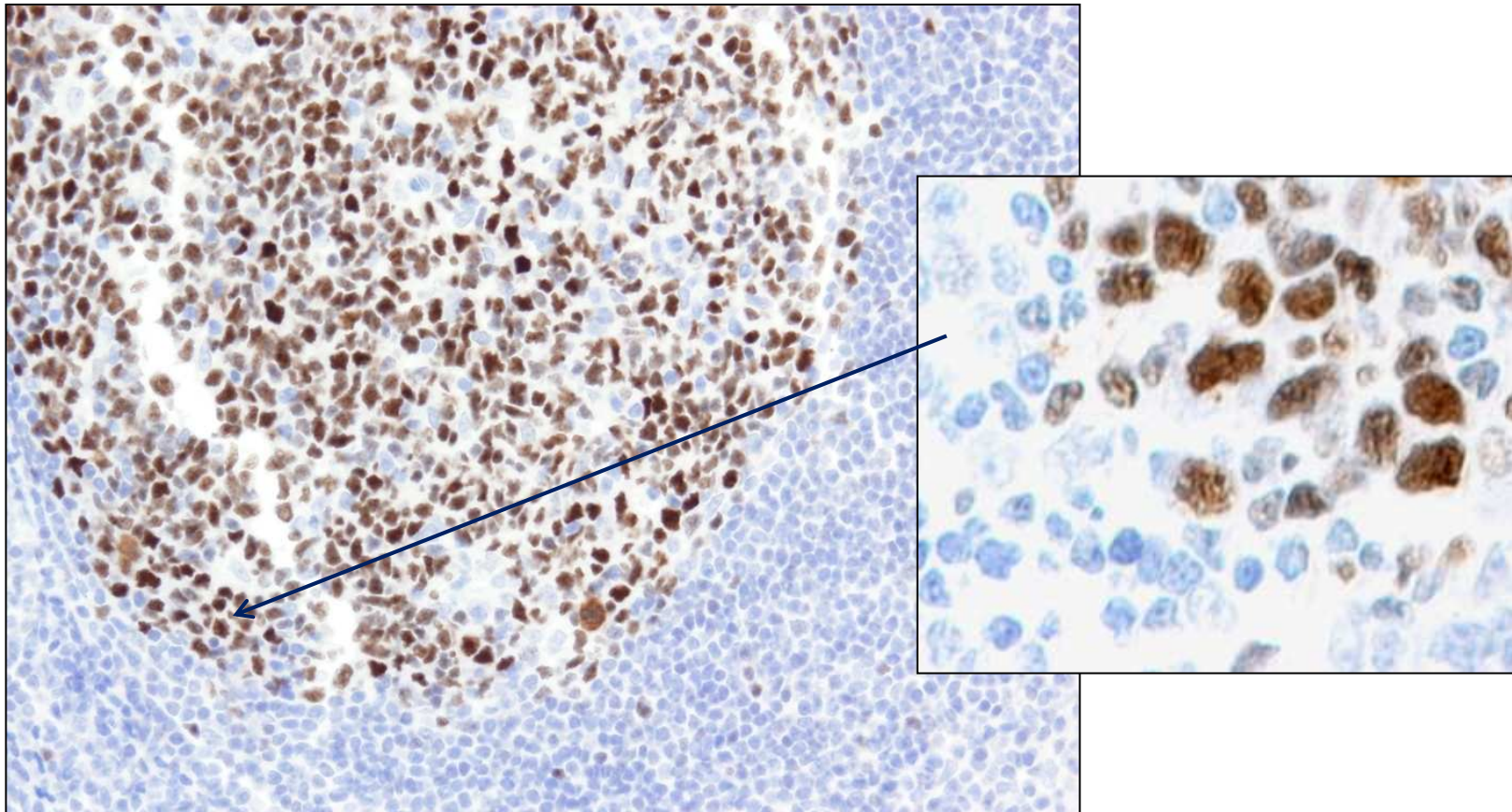


**Figure 2: Western Blotting characterization of G1191E monoclonal antibody**

Western blot analysis of Bcl-6 (G1191E) in total protein extracts from lymphoid tissue, and lymphoma cell lines. Tonsil, thymus, three Burkitt and two DLBCL cell lines show a 95kDa band, corresponding to Bcl-6 protein. No presence of Bcl-6 protein was detected in Toledo cell line.



**Figure 3: Bcl-6 (GI191E) expression in reactive tonsil**



**Human tonsil:** In tonsil Bcl-6 (GI191E) monoclonal antibody is strongly expressed by B cells in the germinal centers.

## Publications using antibody Bcl-6 (GI191E)

Guggisberg K and Jordan R. Mantle cell lymphoma of the oral cavity: case series and comprehensive review of the literature. Oral and maxillofacial pathology. 2010 109 (1): 98-104.

Kanellis G, Roncador G, Arribas A, Mollejo M, Montes-Moreno S, Maestre L, Campos-Martin Y, Rios Gonzalez JR, Martinez-Torrecedradora JL, Sanchez-Verde L, Pajares R, Cigudosa JC, Martin MC and Piris MA. Identification of MNDA as a new marker for nodal marginal zone lymphoma. Leukemia 2009 23, 1847–1857.

Maestre L, Tooze R, Cañamero M, Montes-Moreno S, Ramos R, Doody G, Boll M, Barrans S, Baena S, Piris MA and Roncador G. Expression pattern of XBP1(S) in human B-cell lymphomas. Haematologica. 2009 March; 94(3): 419–422.

Montes-Moreno S, Roncador G, Maestre L, Martínez N, Sánchez-Verde L, Camacho FI, Cannata J, Martínez-Torrecedradora JL, Shen Y, Chan W and Piris MA. Gcet1 (centerin), a highly restricted marker for a subset of germinal center-derived lymphomas. Blood. 2008 111: 351-358.

Garcia JF, Roncador G, Garcia JF, Sanz AI, Maestre L, Lucas E, Montes-Moreno S, Fernandez Victoria R, Martinez-Torrecedradora JL, Marafioti T, Mason DY, Piris MA. PRDM1/BLIMP-1 expression in multiple B and T-cell lymphoma. Haematologica. 2006. Apr; 91(4):46.

García JF, García JF, Maestre L, Lucas E, Sánchez-Verde L, Romero-Chala S, Piris MA, Roncador G. Genetic Immunization: a New Monoclonal Antibody for the Detection of BCL-6 Protein in Paraffin Sections. J Histochem Cytochem. 2006 54(1):31-8.

**Patents:** NO

**Antibody licensed to:** Biologend ,8395 Camino Santa Fe, Ste E, San Diego, California USA.  
Cell Marque Corporation, 6600 Sierra College Blvd, California USA.